



**Western Pacific Storage Solutions**

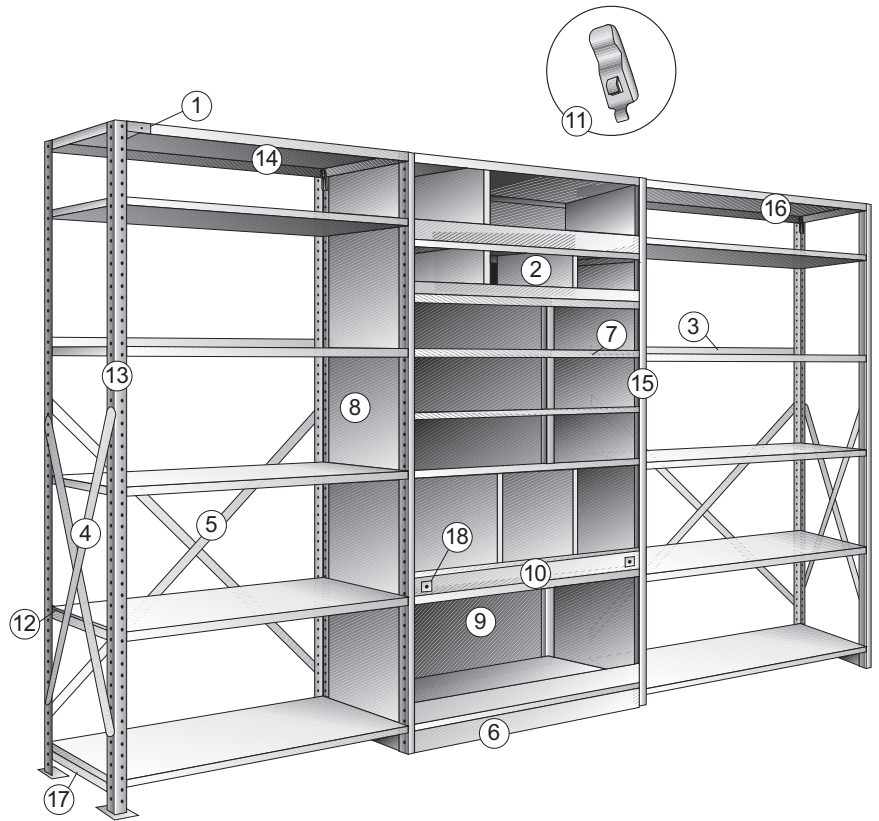
a division of Lyon

## Deluxe Industrial Shelving Specifications

- Standard height 7'3"
- Heights to 18' without splicing in most configurations
- Vertical shelf adjustability in 1" increments
- Widths to 48" and depths to 36"

### Shelving Components

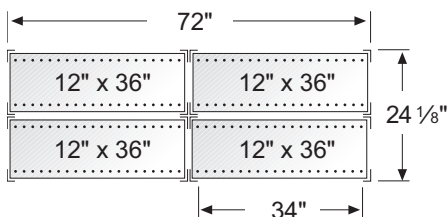
1. Knee Brace
2. Standard Divider
3. Back Package Stop
4. End Sway Braces
5. Back Sway Braces
6. Closed Base
7. Label Holder
8. End Panel
9. Back Panel
10. Bin Front
11. Shelf Clip
12. Flush Bar
13. Angle Post
14. Standard Duty Shelf
15. Beaded Post
16. Heavy Duty Shelf
17. Side Shelf Support
18. Bin Front Clip



### Shelving System Growth

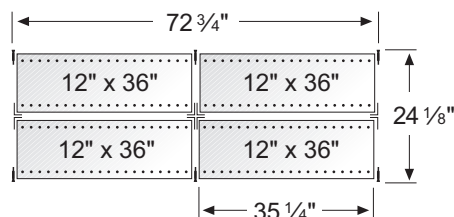
	Angle Post	Beaded Post	High Rise Box Post
Add to Shelf Width:	no growth	no growth per unit + 3/4" per row	no growth per unit + 2" per row
Add to Single Row Shelf Depth:	1/8"	1/8"	7/8" (when using two angle posts at rear)
Add to Double Row Shelf Depth:	1/8"	1/8"	1-5/8"
To Determine Shelf Clear Opening, Subtract from Shelf Width:	2"	3/4"	2"

### Examples using 36" x 12" units, 2 wide by 2 deep



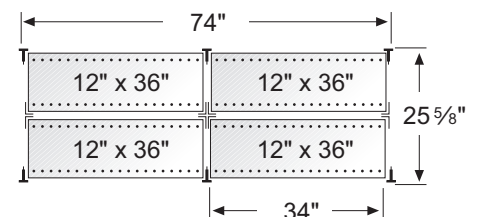
#### Angle Posts

Overall width = 72"  
Overall depth = 24-1/2"  
Clear opening per shelf = 34"



#### Beaded Posts

Overall width = 72-3/4"  
Overall depth = 24-1/8"  
Clear opening per shelf = 35-1/4"



#### High Rise Box Posts

Overall width = 74"  
Overall depth = 25-5/8"  
Clear opening per shelf = 34"



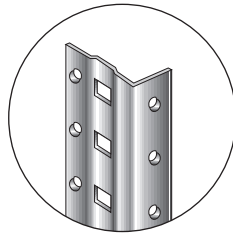
**Western Pacific Storage Solutions**

a division of Lyon

# Deluxe Industrial Shelving Specifications

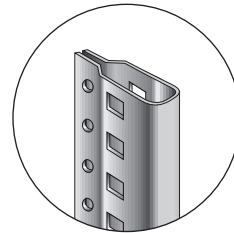
## Post Designs

- 1" vertical shelf adjustability
- All posts roll formed of heavy gauge steel
- Posts adaptable to all storage arrangements except as noted
- Heights available in one-piece lengths up to 18'



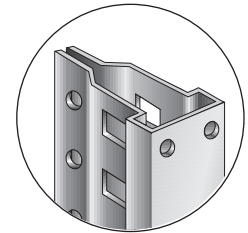
### Angle Post

- Our most popular style
- Stiffening offset rib
- Ideal for seismic applications
- Always used as rear posts in combination with other posts
- Shelf access is reduced by 2"
- 13-gauge steel



### Beaded Post

- Double-sided design with independent shelf positioning - ideal as common posts between multiple units
- Maximum weight-bearing capacity for heavy-duty and multilevel applications
- Unobstructed shelf access
- Shelf slips in and out without tilting, which speeds up installation and rearrangement
- 13-gauge steel

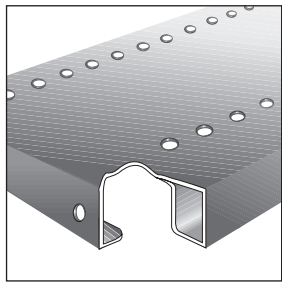


### High Rise Box Post

- Double-sided design with independent shelf positioning - ideal as common posts between multiple units
- For heavy applications - record storage, seismic applications and multilevel systems
- Save space and material on multilevel systems by using the High Rise Box Post on the first level and splice a beaded post above
- Shelf access is reduced by 2"
- 14-gauge steel

## Shelf Construction

- Manufactured from cold rolled steel
- Roll-formed, spot welded box beam construction with lapped and welded corners
- Side edges are return-flange construction
- Punched to accommodate shelf dividers and label holders
- Shelf clips included with medium-duty, standard-duty, high capacity and heavy-duty shelves
- Extra heavy-duty shelves use reinforcing channel (field installed) and attach to upright post using side shelf supports instead of shelf clips



Width	Depth	Medium Duty 24 Gauge	Standard Duty 22 Gauge	High Capacity 20 Gauge	Heavy Duty 18 Gauge	Extra Heavy Duty 18 Gauge (reinforced)
Weight Capacity (lbs./shelf) - Evenly Distributed Static Load						
30	12	-	900	-	-	-
	15	-	850	-	-	-
	18	-	800	-	-	-
	24	-	750	-	-	-
	30	-	500	-	-	-
36	9	-	575	-	-	-
	12	350	600	850	1200	-
	15	-	600	900	-	-
	18	350	600	960	1200	1900
	24	350	600	960	1200	1900
	30	-	500	750	800	1800
	36	-	400	600	800	1800
42	12	-	475	650	1050	-
	15	-	500	700	-	-
	18	-	500	800	1050	1350
	24	-	500	800	1050	1350
	30	-	400	700	1050	1700
	32	-	-	600	900	-
	36	-	375	500	850	1700
	12	-	350	550	800	-
48	15	-	350	-	-	-
	18	-	375	600	800	1350
	24	-	400	640	850	1300
	30	-	375	575	850	1350
	36	-	350	500	850	1350